

Activity Name	Original Duration	Planned Start	Planned Finish	2011				2012				2013				2014				2015				2016	
				Q3	Q4	Q1	Q2	Q3	Q4	Q1	Q2	Q3	Q4	Q1	Q2	Q3	Q4	Q1	Q2	Q3	Q4	Q1	Q2		
HY/2009/15 - CWB TUNNEL (CBTS SECTION)																									
SUBMISSIONS COMPLYING WITH EPs																									
EM&A Manual (rely on the Master EP's submission EP-364/2009/A Condition 2.9)																									
Baseline Monitoring Report (rely on the Master EP's submission EP-364/2009 Condition 3.3)																									
Monthly EM&A (rely on the masters EP's Submission, EP-364/2009/A Condition 3.4)																									
A dedicated website (rely on the master EP's submission, EP-364/2009/A Condition 4.2)																									
Management organization of main construction companies (FEP Condition 2.6)	1d	02-Oct-10	02-Oct-10																						
Work Schedule (FEP Condition 2.7)	1d	27-Oct-10	27-Oct-10																						
Location Plan (FEP Condition 2.8)	1d	27-Oct-10	27-Oct-10																						
Noise Management plan (FEP Condition 2.9)	1d	27-Oct-10	27-Oct-10																						
Landscape plan (FEP condition 2.10)	1d	31-Jan-11	31-Jan-11																						
EAST VENTILATION ADIT																									
CCT @ Portion 1, 2, 4, 6, 22	1315d	27-Sep-10	03-May-14																						
EV Adit @ Portion 4-Advance Works	526d	27-Sep-10	05-Mar-12																						
EV Adit Portion 1, 2, 6, 22	26d	22-Dec-11	16-Jan-12																						
EV Adit-based on Conforming Design	323d	15-Feb-12	02-Jan-13																						
TCBR1E (TS1 Area)																									
Diaphragm Wall Construction (incl. SI, & tests after completion)	107d	26-Apr-11	10-Aug-11																						
Excavation & Lateral Support, ELS	99d	16-Jul-11	22-Oct-11																						
Cut & Cover Tunnel Construction (incl. backfill)	78d	22-Oct-11	07-Jan-12																						
OHVD and Cable Trough (access from Portion 22)	76d	18-Dec-13	03-Mar-14																						
TCBR2 + TCBR3 (TS2 Area)																									
Diaphragm Wall Construction	118d	06-Jul-12	31-Oct-12																						
Excavation & Lateral Support, ELS	248d	06-Jul-12	10-Mar-13																						
Cut & Cover Tunnel Construction	164d	11-Mar-13	21-Aug-13																						
OHVD Cable Trough (Access from Portion 22)	150d	05-Aug-13	01-Jan-14																						
TCBR1W (TS4 Area)																									
Diaphragm Wall Construction	148d	28-Jun-11	22-Nov-11																						
Excavation & Lateral Support, ELS	319d	26-Jun-11	11-May-12																						
Landing Steps - Demolition/Reconstruct as footpath	40d	28-Jun-11	23-Aug-11																						

- ◆ Milestone
- ◆ Milestone
- ▨ Remaining Work
- ▨ Critical Remaining Work
- ▨ Actual Work

1 of 2

China State Construction Engineering (Hong Kong) Ltd.

Contract No. HY/2009/15 - Central Wan Chai By Pass - Tunnel

(CBTS Section)

Prepared by William Caluza			
Date	Revision	Checked	Approved
14-Mar-11	Revision C	ST	KL
	File: GC01a		
	(Layout:HY/2009/15: CWB - Summary)		

中國建築工程(香港)有限公司

CHINA STATE CONSTRUCTION ENGINEERING (HONG KONG) LTD

Activity Name	Original Duration	Planned Start	Planned Finish	2011					2012				2013				2014				2015				2016	
				Q3	Q4	Q1	Q2	Q3	Q4	Q1	Q2	Q3	Q4	Q1	Q2	Q3	Q4	Q1	Q2	Q3	Q4	Q1	Q2	Q3	Q4	Q1
Rock Excavation	235d	25-Apr-12	15-Dec-12																							
ME4-Diaphragm Wall	114d	10-May-12	19-Oct-12																							
AS Logistics Area for Mined Tunneling Works	174d	01-Jun-12	07-Feb-13																							
ME4-ELS Works	212d	01-Jun-12	02-Apr-13																							
SCL Entrusted Works	291d	18-Jul-12	08-Sep-13																							
Cut & Cover Tunnel Construction (w/o TS4 +)	111d	17-Dec-12	06-Apr-13																							
ME4-RC Structure	146d	28-Jan-13	21-Aug-13																							
OHVD and Cable Trough (Access from TZ5/TPCWAE/TPCWAW)	180d	17-Jun-13	13-Dec-13																							
MINED TUNNEL																										
CHT Protection Works @ location A, B, C	342d	27-Sep-10	01-Feb-12																							
Tunnel works from West Portal (access from TPCWAE& TZ5	418d	12-Mar-12	30-Oct-13																							
Tunnel Works from East Portal (Access from TS4 Area)	214d	30-Mar-12	01-Feb-13																							
Tunnel OHVD & Cable Trough	384d	02-Dec-13	22-May-15																							
TPCWAE																										
Drainage Diversion works along Hung Hing Road (Portion 19)	176d	15-Oct-10	24-Jun-11																							
Diaphragm Wall Construction	147d	20-May-11	13-Oct-11																							
Excavation & Lateral Support, ELS	421d	20-May-11	13-Jul-12																							
Rock Excavation	208d	12-Mar-12	03-Oct-12																							
AS Logistics Area for Mined Tunneling works	342d	12-May-12	18-Apr-13																							
Cut & Cover Tunnel Construction	130d	28-Jan-13	06-Jun-13																							
OHVD and Cable Trough (Access from TZ5/TPCWAW)	182d	18-Feb-15	18-Aug-15																							
TPCWAW & PORTION 11																										
Diaphragm Wall Construction + Portion 11	222d	25-Oct-13	03-Jun-14																							
Excavation & Lateral Support, ELS	478d	25-Oct-13	14-Feb-15																							
Cut & Cover Tunnel Construction	143d	30-Dec-14	21-May-15																							
OHVD and Cable Trough Installation (Access from Portion 11)	235d	22-May-15	11-Jan-16																							

- ◆ Milestone
- ◆ Milestone
- ▨ Remaining Work
- ▨ Critical Remaining Work
- ▨ Actual Work

2 of 2

China State Construction Engineering (Hong Kong) Ltd.

Contract No. HY/2009/15 - Central Wan Chai By Pass - Tunnel

(CBTS Section)

Prepared by William Caluza			
Date	Revision	Checked	Approved
14-Mar-11	Revision C	ST	KL
	File: 0001a		
	(Layout: HY/2009/15: CWB - Summary)		

中國建築工程(香港)有限公司
CHINA STATE CONSTRUCTION ENGINEERING (HONG KONG) LTD.

Data Date: 20-Aug-12
 Print Date: 25-Aug-12

HY/2009/18 Central - Wan Chai Bypass (Central Interchange)



TASK filters: 3 Months, Not HL.

Activity ID	Activity Name	Original Durati...	Start	Finish	Total Float	2012				
						Aug	Sep	Oct	Nov	
Update 2012-08-20 CWB - Central Interchange (2012-07-16) Revised DWP R3										
PRELIMINARIES										
Access Dates & Milestones										
Portion Possession Dates										
1304	Portion VI Available (DAY-783)	0	12-Nov-12*		0					
Submissions & Approvals										
Programme										
1689	Programme - Engineer Review and Approve Revised Detailed Works Programme and Narrative Statement	28	18-Jul-12 A	08-Aug-12 A						
Specified Plans										
MTRC Impact Assessment Report										
1501	Resubmit MTRC Impact Assessment Report - Phase 2	12	19-Feb-12 A	13-Aug-12 A						
1553	MTRC Impact Assessment Report - Engineer / MTRC Review & Comment (MYS)	12	01-Jun-12 A	20-Jul-12 A						
1669	Resubmit MTRC Impact Assessment Report - Cut & Cover Tunnel	28	03-Jun-12 A	17-Aug-12 A						
1504	MTRC Impact Assessment Report - Engineer / MTRC Review & Comment (Phase 2)	12	14-Aug-12 A	25-Aug-12	10					
1670	MTRC Impact Assessment Report - Engineer / MTRC Review & Comment (Cut & Cover)	12	18-Aug-12 A	29-Aug-12	57					
Traffic										
Temporary Traffic Management										

- Current Milestone
- Critical Remaining Work
- Level of Effort
- Remaining Work
- Baseline Milestone
- Project Baseline
- Actual Work

Leighton Contractors (Asia) Limited Programme Update 23 (Aug 2012) THREE MONTH ROLLING

Project ID: U023
 Baseline: DCP4-2
 Layout: Update Three Month Rolling U023
 Page 1 of 12

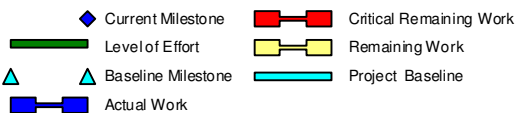
U023 Programme Update 23 (Aug 2012)			
Date	Revision	Checked	Approv...
21-Aug-12	U023	RC	RW
21-Jul-12	U022	RC	RW

HY/2009/18 Central - Wan Chai Bypass (Central Interchange)



TASK filters: 3 Months, Not HL.

Activity ID	Activity Name	Original Durati...	Start	Finish	Total Float	2012				
						Aug	Sep	Oct	Nov	
1637	TTM - Engineer / 18th TMLG Review & Approve	19	18-Jul-12 A	24-Jul-12 A						
1638	TTM - Revise & Resubmit	18	25-Jul-12 A	22-Aug-12 A						
1691	TTM - Engineer / 19th TMLG Review & Approve	19	20-Aug-12	07-Sep-12	308					
1692	TTM - Revise & Resubmit	18	08-Sep-12	25-Sep-12	308					
1697	TTM - Engineer / 20th TMLG Review & Approve	19	26-Sep-12	14-Oct-12	308					
1700	TTM - Revise & Resubmit	18	15-Oct-12	01-Nov-12	308					
Design										
Cost Saving Design (Contractor's Alternative Design)										
3728	CSD - Engineer Review & Approve Alternative Design (OHVD)	28	27-Jan-11 A	25-Aug-12	1481					
1617	BP - Pre-bored H Pile Scheme Design Engineer Review & Approval	28	03-May-12 A	25-Aug-12	389					
1642	BP - Pre-bored H Pile Scheme Design Engineer Review & Approval	28	21-Jun-12 A	25-Aug-12	389					
1701	BP - Prepare & Submit Revised Pre-bored H Pile Detailed Design	52	21-Jun-12 A	16-Aug-12 A						
1763	BP - Revised Pre-bored H Pile Scheme Design Engineer Review & Approval	28	17-Aug-12 A	13-Sep-12	370					
Temporary Works Design										
Bridge / Viaduct Temporary Works										
3690	Bridge/Viaduct - Scaffolding Design Engineer Review & Comment	28	16-Jun-12 A	26-Aug-12	527					
1643	Bridge/Viaduct - ELS Design Engineer Review & Comment	28	16-Jun-12 A	20-Aug-12 A						



Leighton Contractors (Asia) Limited Programme Update 23 (Aug 2012) THREE MONTH ROLLING

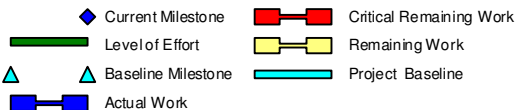
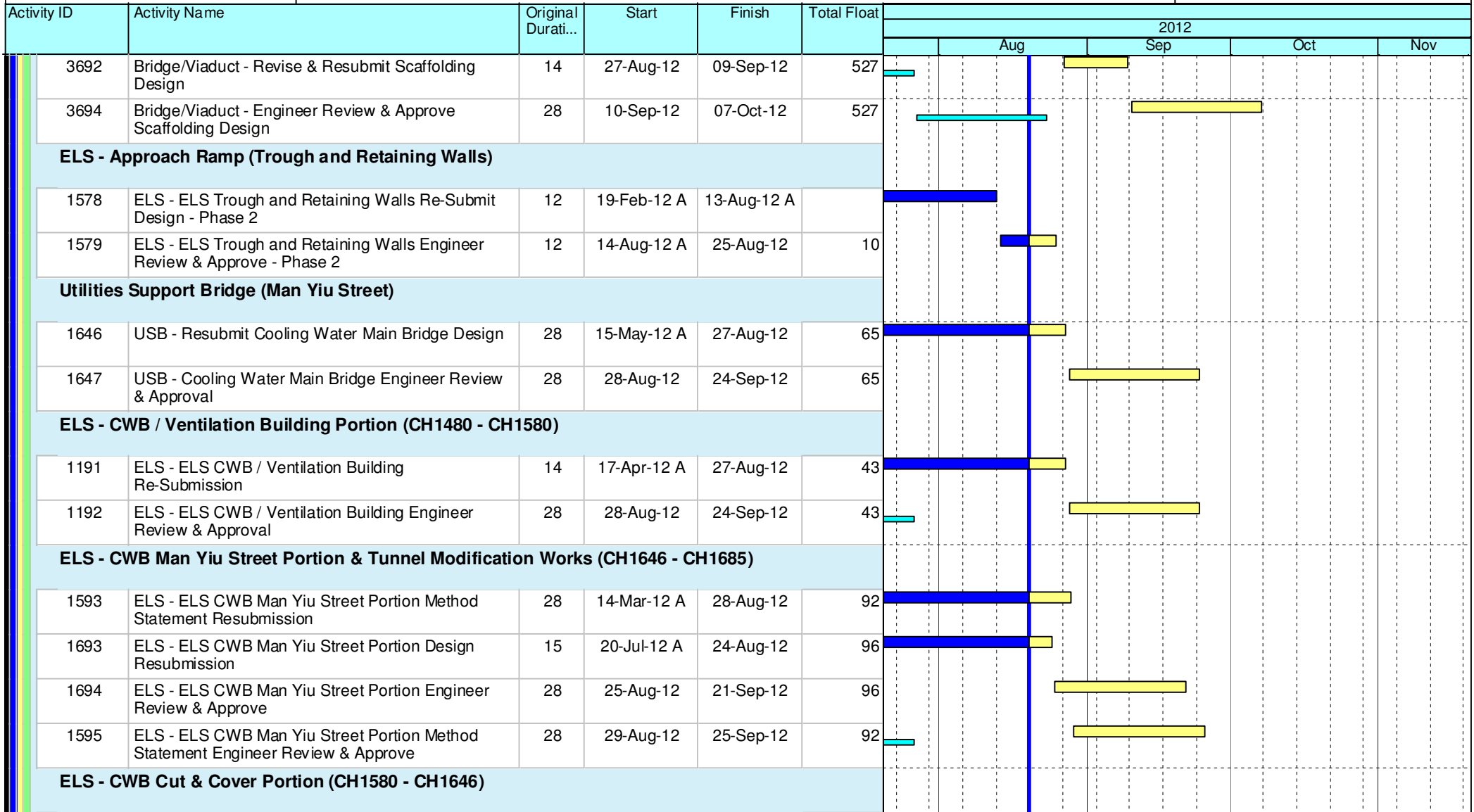
Project ID: U023
 Baseline: DCP4-2
 Layout: Update Three Month Rolling U023
 Page 2 of 12

U023 Programme Update 23 (Aug 2012)			
Date	Revision	Checked	Approv...
21-Aug-12	U023	RC	RW
21-Jul-12	U022	RC	RW

Data Date: 20-Aug-12
 Print Date: 25-Aug-12

HY/2009/18 Central - Wan Chai Bypass (Central Interchange)

TASK filters: 3 Months, Not HL.



Leighton Contractors (Asia) Limited Programme Update 23 (Aug 2012) THREE MONTH ROLLING

Project ID: U023
 Baseline: DCP4-2
 Layout: Update Three Month Rolling U023
 Page 3 of 12

U023 Programme Update 23 (Aug 2012)			
Date	Revision	Checked	Approv...
21-Aug-12	U023	RC	RW
21-Jul-12	U022	RC	RW

HY/2009/18 Central - Wan Chai Bypass (Central Interchange)



TASK filters: 3 Months, Not HL.

Activity ID	Activity Name	Original Durati...	Start	Finish	Total Float	2012				
						Aug	Sep	Oct	Nov	
1661	ELS - ELS CWB CH1580-CH1646 Portion Re-submit Design	15	03-Jun-12 A	17-Aug-12 A						
1662	ELS - ELS CWB CH1580-CH1646 Portion Re-submit Design Engineer Review & Comment	12	18-Aug-12 A	29-Aug-12	92					
ELS - CWB CRIII Portion (CH1685 - CH1704)										
1695	ELS - ELS CRIII Portion Resubmit Design	28	20-Jul-12 A	24-Aug-12	241					
1696	ELS - ELS CRIII Portion Design Engineer Review & Approve	28	25-Aug-12	21-Sep-12	241					
ELS - Retaining Wall										
1169	ELS - ELS Retaining Wall VI Portion Prepare Design	52	20-Aug-12	10-Oct-12	548					
1170	ELS - ELS Retaining Wall VI Portion Prepare Method Statement	15	13-Oct-12	27-Oct-12	548					
1171	ELS - ELS Retaining Wall VI Portion ICE Check & Endorse	15	28-Oct-12	11-Nov-12	548					
1173	ELS - ELS Retaining Wall VI Portion Engineer Review & Approve Design	28	12-Nov-12	09-Dec-12	548					
Procurement, Shop Drawing, Manufacture & Delivery										
Excavation & Lateral Support										
1172	ELS - Wailing & Shoring Material Sourcing, Procurement and Delivery (Retaining Wall)	60	11-Oct-12	09-Dec-12	548					
1126	ELS - Wailing & Shoring Material Sourcing, Procurement and Delivery (Man Yiu St.)	60	30-Oct-12	28-Dec-12	13					
Cut & Cover Tunnel										
3812	Falsework and Formwork for Cut & Cover Tunnel Shop Drawing	28	31-Aug-12	27-Sep-12	25					
3814	Falsework and Formwork for Cut & Cover Tunnel Material Procurment	28	28-Sep-12	25-Oct-12	25					

- Current Milestone
- Critical Remaining Work
- Level of Effort
- Remaining Work
- Baseline Milestone
- Project Baseline
- Actual Work

Leighton Contractors (Asia) Limited Programme Update 23 (Aug 2012) THREE MONTH ROLLING

Project ID: U023
 Baseline: DCP4-2
 Layout: Update Three Month Rolling U023
 Page 4 of 12

U023 Programme Update 23 (Aug 2012)			
Date	Revision	Checked	Approv...
21-Aug-12	U023	RC	RW
21-Jul-12	U022	RC	RW

Data Date: 20-Aug-12
 Print Date: 25-Aug-12

HY/2009/18 Central - Wan Chai Bypass (Central Interchange)



TASK filters: 3 Months, Not HL.

Activity ID	Activity Name	Original Durati...	Start	Finish	Total Float	2012				
						Aug	Sep	Oct	Nov	
3810	Falsework and Formwork for Cut & Cover Tunnel Off-site Fabrication	24	26-Oct-12	18-Nov-12	25					
Overhead Ventilation Duct										
1660	OHVD - Mobilization & Yard Preparation & Trial Panel	30	15-Jun-12 A	20-Aug-12 A						
3815	OHVD - Manufacture Precast Panels (~150#)	76	20-Aug-12	03-Nov-12	39					
1627	OHVD - Manufacture Precast Panels (~450#)	92	04-Nov-12	03-Feb-13	39					
Bored Piling										
3820	BP - Tender / Award Pre-bored H Pile Subcontract	30	20-Jun-12 A	31-Aug-12	791					
Post-tensioning										
3830	PT - Tender / Award Bridge Post-tensioning Subcontract	60	03-Nov-12	01-Jan-13	334					
Bridge Bearings										
3843	BEAR - Prepare & Submit Design & Particulars of Bearings	30	03-Nov-12	02-Dec-12	334					
Utilities Support Bridge (Man Yiu Street)										
3923	USB - Utilities Support Bridge Manufacture and Delivery, Mobilization	57	08-Jun-12 A	03-Oct-12	56					
Establishment, Mobilisation & Advanced Works										
Instrumentation and Monitoring										
3012	INS - Portion VI Install Instrumentation	54	12-Nov-12	16-Jan-13	449					
SECTION 3A - ALL TUNNEL WORKS IN PORTION IIIB										

- ◆ Current Milestone
- Critical Remaining Work
- ▬ Level of Effort
- ▬ Remaining Work
- ▲ Baseline Milestone
- ▬ Project Baseline
- ▬ Actual Work

Leighton Contractors (Asia) Limited Programme Update 23 (Aug 2012) THREE MONTH ROLLING

Project ID: U023
 Baseline: DCP4-2
 Layout: Update Three Month Rolling U023
 Page 5 of 12

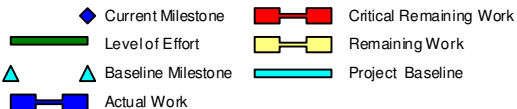
U023 Programme Update 23 (Aug 2012)			
Date	Revision	Checked	Approv...
21-Aug-12	U023	RC	RW
21-Jul-12	U022	RC	RW

HY/2009/18 Central - Wan Chai Bypass (Central Interchange)



TASK filters: 3 Months, Not HL.

Activity ID	Activity Name	Original Durati...	Start	Finish	Total Float	2012					
						Aug	Sep	Oct	Nov		
CWB Tunnel - CH1704 to CH1825											
CWB Tunnel Internal Works											
1410	1704-1825 - Drill & Fix Rebar	7	15-Oct-12	22-Oct-12	1236						
CWB Tunnel - CH1685 to CH1704											
CWB Tunnel Structure											
1340	1685-1695 - Construct D-Wall Barrettes	38	26-Apr-12 A	29-Aug-12	89						
1342	1685-1704 - Sonic Test, Interface Core Test & Full Core Test	24	11-Jul-12 A	07-Sep-12	194						
1635	1685-1695 - Construct D-Wall Barrettes (W1D34)	17	16-Jul-12 A	15-Aug-12 A							
1197	1685-1695 - Construct D-Wall Barrettes (W2D33)	18	20-Jul-12 A	07-Aug-12 A							
1634	1685-1695 - Construct D-Wall Barrettes (BC20)	18	08-Aug-12 A	29-Aug-12	190						
SECTION 3B - ALL TUNNEL WORKS IN PORTION IIIC											
CWB Tunnel - CH1825 to CH2600											
CWB Tunnel Internal Works											
1370	1825-2600 - Drill & Fix Rebar Ch2600-2300	50	01-Jun-12 A	18-Aug-12 A							
1733	1825-2600 - Drill & Fix Rebar Ch2300 - 2000	30	27-Aug-12	29-Sep-12	1189						
1380	1825-2600 - Prepare CJ Ch2600 - 2300	40	29-Aug-12	16-Oct-12	50						
1372	1825-2600 - Drill & Fix Rebar Ch2000 - 1825	10	03-Oct-12	13-Oct-12	1219						



Leighton Contractors (Asia) Limited Programme Update 23 (Aug 2012) THREE MONTH ROLLING

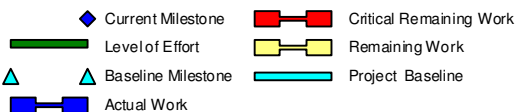
Project ID: U023
 Baseline: DCP4-2
 Layout: Update Three Month Rolling U023
 Page 6 of 12

U023 Programme Update 23 (Aug 2012)			
Date	Revision	Checked	Approv...
21-Aug-12	U023	RC	RW
21-Jul-12	U022	RC	RW

HY/2009/18 Central - Wan Chai Bypass (Central Interchange)

TASK filters: 3 Months, Not HL.

Activity ID	Activity Name	Original Durati...	Start	Finish	Total Float	2012				
						Aug	Sep	Oct	Nov	
1744	1825-2600 - Prepare CJ Ch2300 - 2000	40	17-Oct-12	03-Dec-12	1177					
1390	1825-2600 - Erect Precast Slab & Stitching & Construct Kicker Ch2600 - 2300	86	12-Nov-12	01-Mar-13	29					
SECTION 4B - ALL TUNNEL WORKS IN PORTION IVC, IVD, IVE & IVF										
CWB Tunnel - CH1480 to CH1580										
CWB Tunnel Structure										
1382	1480-1580 - Breaking Unforeseeable Concrete Slab	19	03-Jul-12 A	24-Jul-12 A						
1676	1480-1580 - Erect 2nd Layer Strut (West)	21	15-Jul-12 A	01-Aug-12 A						
1420	1480-1580 - Excavate 1st Layer (East) - Remaining	19	25-Jul-12 A	09-Aug-12 A						
1673	1480-1580 - Erect 1st Layer Strut (East)	16	10-Aug-12 A	17-Aug-12 A						
1679	1480-1580 - Excavate 3rd Layer (West)	9	15-Aug-12 A	04-Sep-12	23					
1675	1480-1580 - Excavate 2nd Layer (East)	15	16-Aug-12 A	25-Aug-12	13					
1678	1480-1580 - Erect 2nd Layer Strut (East)	15	27-Aug-12	12-Sep-12	13					
1681	1480-1580 - Erect 3rd Layer Strut (West)	15	05-Sep-12	21-Sep-12	23					
1680	1480-1580 - Excavate 3rd Layer (East)	6	13-Sep-12	19-Sep-12	13					
1682	1480-1580 - Erect 3rd Layer Strut (East)	25	20-Sep-12	20-Oct-12	13					
1683	1480-1580 - Excavate 4th Layer (West)	13	22-Sep-12	09-Oct-12	23					
1684	1480-1580 - Erect 4th Layer Strut (West)	11	10-Oct-12	22-Oct-12	23					



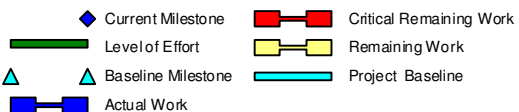
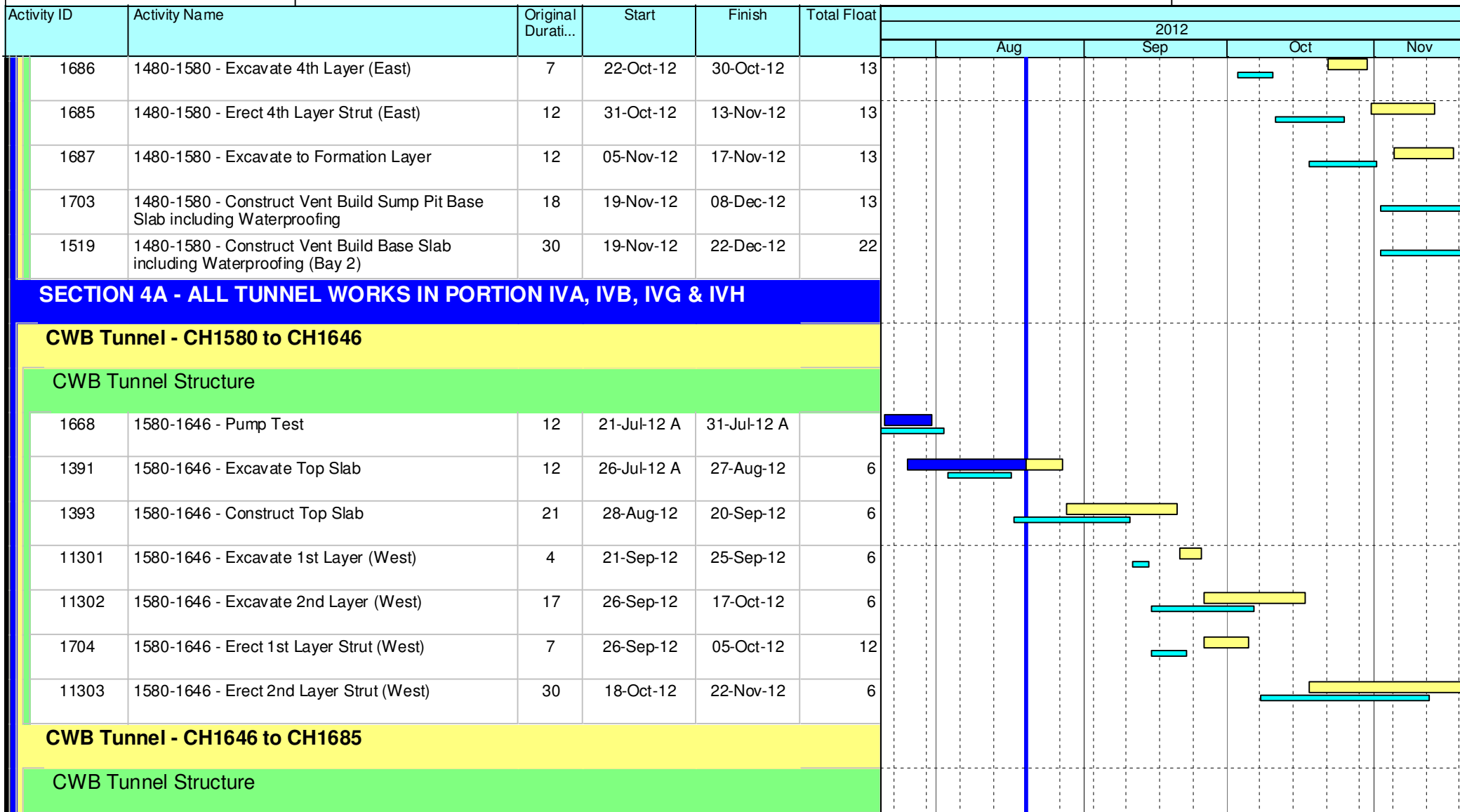
Leighton Contractors (Asia) Limited Programme Update 23 (Aug 2012) THREE MONTH ROLLING

Project ID: U023
 Baseline: DCP4-2
 Layout: Update Three Month Rolling U023
 Page 7 of 12

U023 Programme Update 23 (Aug 2012)			
Date	Revision	Checked	Approv...
21-Aug-12	U023	RC	RW
21-Jul-12	U022	RC	RW

HY/2009/18 Central - Wan Chai Bypass (Central Interchange)

TASK filters: 3 Months, Not HL.



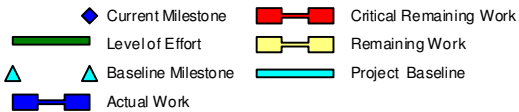
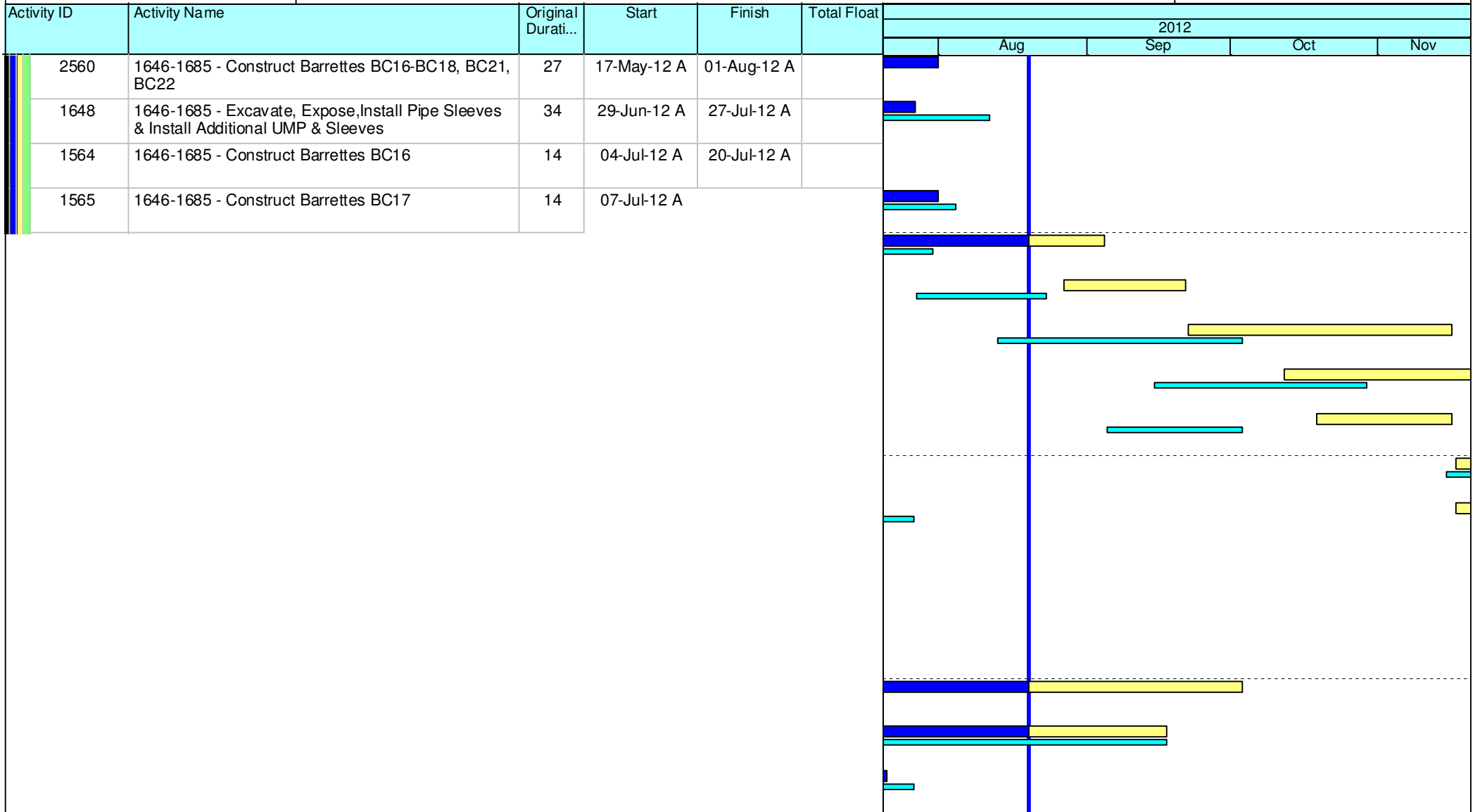
Leighton Contractors (Asia) Limited Programme Update 23 (Aug 2012) THREE MONTH ROLLING

Project ID: U023
 Baseline: DCP4-2
 Layout: Update Three Month Rolling U023
 Page 8 of 12

U023 Programme Update 23 (Aug 2012)			
Date	Revision	Checked	Approv...
21-Aug-12	U023	RC	RW
21-Jul-12	U022	RC	RW

HY/2009/18 Central - Wan Chai Bypass (Central Interchange)

TASK filters: 3 Months, Not HL.



Leighton Contractors (Asia) Limited Programme Update 23 (Aug 2012) THREE MONTH ROLLING

Project ID: U023
 Baseline: DCP4-2
 Layout: Update Three Month Rolling U023
 Page 9 of 12

U023 Programme Update 23 (Aug 2012)			
Date	Revision	Checked	Approv...
21-Aug-12	U023	RC	RW
21-Jul-12	U022	RC	RW

Data Date: 20-Aug-12
 Print Date: 25-Aug-12

HY/2009/18 Central - Wan Chai Bypass (Central Interchange)

TASK filters: 3 Months, Not HL.

Activity ID	Activity Name	Original Durati...	Start	Finish	Total Float	2012			
						Aug	Sep	Oct	Nov
2120	MKSVWB - Roadworks	62	28-Aug-12	10-Nov-12	250	[Gantt bars for 2120]			
2130	MKSVWB - Finishes & Landscaping	50	12-Nov-12	11-Jan-13	523	[Gantt bars for 2130]			
CWB Trough B - CH1360 to CH1480									
Trough Structure									
Trough Phase 1									
1267	TRB - Lateral Support - Phase 1 North Portion	21	26-Jul-12 A	31-Aug-12	63	[Gantt bars for 1267]			
1389	TRB - Excavate - Phase 1 North Portion	28	01-Sep-12	05-Oct-12	63	[Gantt bars for 1389]			
1268	TRB - Construct Trough Slab - Phase 1 North Porti...	30	06-Oct-12	10-Nov-12	63	[Gantt bars for 1268]			
11640	TRB - Excavate 3rd Layer (Ch1480 Corner)	6	20-Sep-12	26-Sep-12	6	[Gantt bars for 11640]			
11650	TRB - Erect 3rd Layer Support (1 Strut)	8	27-Sep-12	08-Oct-12	6	[Gantt bars for 11650]			

- ◆ Current Milestone
- Critical Remaining Work
- Level of Effort
- Remaining Work
- ▲ Baseline Milestone
- Project Baseline
- Actual Work

Leighton Contractors (Asia) Limited Programme Update 23 (Aug 2012) THREE MONTH ROLLING

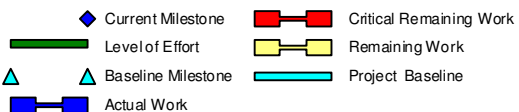
Project ID: U023
 Baseline: DCP4-2
 Layout: Update Three Month Rolling U023
 Page 10 of 12

U023 Programme Update 23 (Aug 2012)			
Date	Revision	Checked	Approv...
21-Aug-12	U023	RC	RW
21-Jul-12	U022	RC	RW

HY/2009/18 Central - Wan Chai Bypass (Central Interchange)

TASK filters: 3 Months, Not HL.

Activity ID	Activity Name	Original Durati...	Start	Finish	Total Float	2012				
						Aug	Sep	Oct	Nov	Dec
11660	TRB - Excavate 4th Layer (Ch1480 Corner)	4	09-Oct-12	12-Oct-12	43					
1350	TRB - Erect 1st Layer Support (1 Strut)	8	09-Oct-12	17-Oct-12	6					
1360	TRB - Excavate 2nd Layer (Remaining)	12	18-Oct-12	01-Nov-12	6					
1385	TRB - Erect 2nd Layer Support (2 Struts)	13	02-Nov-12	16-Nov-12	6					
1394	TRB - Excavate 3rd Layer (Remaining)	15	17-Nov-12	04-Dec-12	6					
SECTION 6 - ALL WORKS IN PORTION VI										
Bridge B										
Preliminaries										
2159	BRB - Implement Localised TTA	12	12-Nov-12	24-Nov-12	272					
General Surface Works										
Formation & Roadworks - Man Kwong Street West Bound										
2502	MKSVIWB - Tree Transplanting / Felling	25	30-Jan-12 A	03-Oct-12	243					
2510	MKSVIWB - U/G Drainage & Ducts	50	17-Apr-12 A	17-Sep-12	225					
1576	MKSVIWB - Gas Main Installation	81	24-Apr-12 A	21-Jul-12 A						
2520	MKSVIWB - Roadworks	62	28-Aug-12	10-Nov-12	225					
2530	MKSVIWB - Finishes & Landscaping	50	12-Oct-12	10-Dec-12	225					
Retaining Wall G										



Leighton Contractors (Asia) Limited Programme Update 23 (Aug 2012) THREE MONTH ROLLING

Project ID: U023
 Baseline: DCP4-2
 Layout: Update Three Month Rolling U023
 Page 11 of 12








U023 Programme Update 23 (Aug 2012)			
Date	Revision	Checked	Approv...
21-Aug-12	U023	RC	RW
21-Jul-12	U022	RC	RW

Data Date: 20-Aug-12
 Print Date: 25-Aug-12

HY/2009/18 Central - Wan Chai Bypass (Central Interchange)

TASK filters: 3 Months, Not HL.

Activity ID	Activity Name	Original Durati...	Start	Finish	Total Float	2012				
						Aug	Sep	Oct	Nov	
2798	RWG - Implement Localised TTA on Finance Street	24	12-Nov-12	08-Dec-12	434					
Bridge A										
Preliminaries										
2250	BRA - Site Clearance	56	16-Jun-12 A	29-Sep-12	283					

-  Current Milestone
-  Critical Remaining Work
-  Level of Effort
-  Remaining Work
-  Baseline Milestone
-  Project Baseline
-  Actual Work

Leighton Contractors (Asia) Limited Programme Update 23 (Aug 2012) THREE MONTH ROLLING

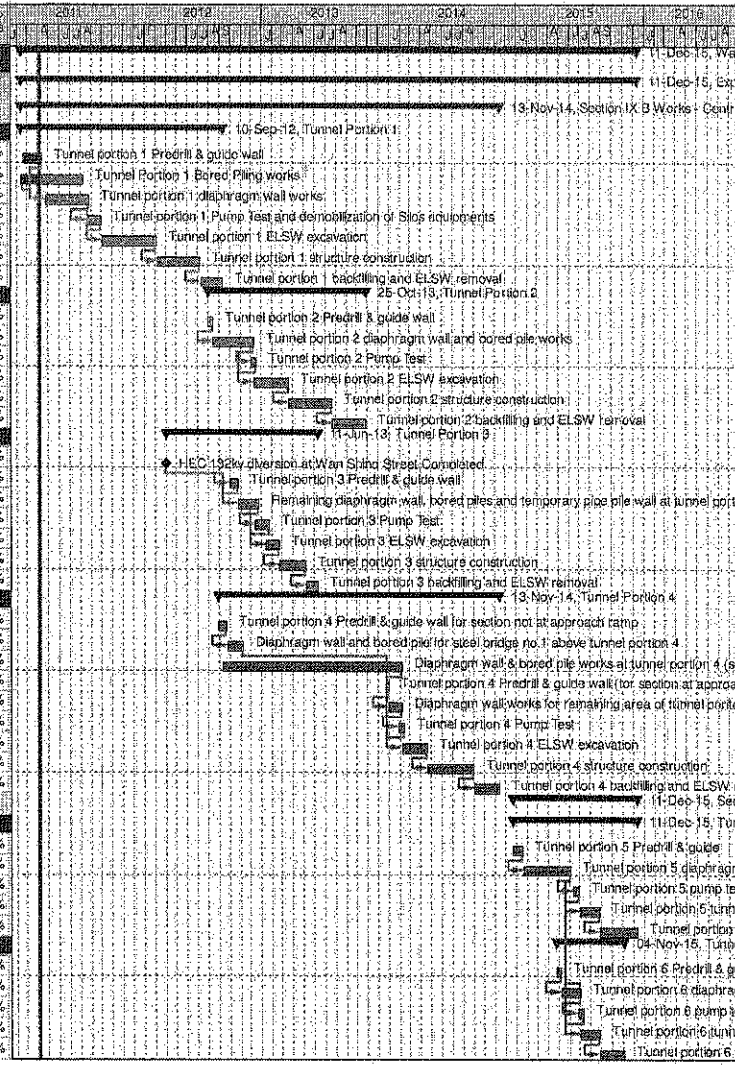
Project ID: U023
 Baseline: DCP4-2
 Layout: Update Three Month Rolling U023
 Page 12 of 12

U023 Programme Update 23 (Aug 2012)			
Date	Revision	Checked	Approv...
21-Aug-12	U023	RC	RW
21-Jul-12	U022	RC	RW

Wan Chai Development Phase II - Central - Wan Chai
Bypass at Wan Chai East CONTRACT HK/2009/02

CHUN WO - CRGL JV

Activity ID	Activity Name	OD	Start	Finish	% Planned	2011	2012	2013	2014	2015	2016
Wan Chai Development Phase II - Central - Wan Chai Bypass at Wan Chai East											
Expanded and More Detailed Initial Works Programme											
Section IX B Works - Central - Wan Chai Bypass Tunnel Structure from chainage 3400 to eastern tunnel											
Tunnel Portion 1											
S9B-T1-0005	Tunnel portion 1 Predrill & guide wall	10	18-Feb-11	13-Apr-11	40%						
S9B-T1-0007	Tunnel Portion 1 Bored Piling works	105	09-Feb-11	08-Aug-11	0%						
S9B-T1-0010	Tunnel portion 1 diaphragm wall works	105	26-Apr-11	27-Aug-11	0%						
S9B-T1-0015	Tunnel portion 1 Pump Test and demobilization of Slos equipments	35	20-Aug-11	30-Sep-11	0%						
S9B-T1-0020	Tunnel portion 1 ELSW excavation	130	03-Oct-11	07-Mar-12	0%						
S9B-T1-0030	Tunnel portion 1 structure construction	100	09-Mar-12	09-Jul-12	0%						
S9B-T1-0040	Tunnel portion 1 backfilling and ELSW removal	54	10-Jul-12	10-Sep-12	0%						
Tunnel Portion 2											
S9B-T2-0105	Tunnel portion 2 Predrill & guide wall	10	02-Aug-12	13-Aug-12	0%						
S9B-T2-0010	Tunnel portion 2 diaphragm wall and bored pile works	100	14-Aug-12	10-Dec-12	0%						
S9B-T2-0015	Tunnel portion 2 Pump Test	14	03-Dec-12	18-Dec-12	0%						
S9B-T2-0020	Tunnel portion 2 ELSW excavation	80	11-Dec-12	19-Mar-13	0%						
S9B-T2-0030	Tunnel portion 2 structure construction	100	20-Mar-13	22-Jul-13	0%						
S9B-T2-0040	Tunnel portion 2 backfilling and ELSW removal	80	23-Jul-13	25-Oct-13	0%						
Tunnel Portion 3											
S9B-T3-0005	HEC 132kv diversion at Wan Shing Street Completed	0	01-Apr-12*		0%						
S9B-T3-0008	Tunnel portion 3 Predrill & guide wall	20	02-Oct-12	25-Oct-12	0%						
S9B-T3-0010	Remaining diaphragm wall, bored piles and temporary pipe pile wall at tunnel portion 3	50	25-Oct-12	22-Dec-12	0%						
S9B-T3-0015	Tunnel portion 3 Pump Test	30	15-Dec-12	22-Jan-13	0%						
S9B-T3-0020	Tunnel portion 3 ELSW excavation	30	15-Jan-13	20-Feb-13	0%						
S9B-T3-0030	Tunnel portion 3 structure construction	80	21-Feb-13	08-May-13	0%						
S9B-T3-0040	Tunnel portion 3 backfilling and ELSW removal	30	07-May-13	11-Jun-13	0%						
Tunnel Portion 4											
S9B-T4-0005	Tunnel portion 4 Predrill & guide wall for section not at approach ramp	21	30-Aug-12	22-Sep-12	0%						
S9B-T4-0010	Diaphragm wall and bored pile for steel bridge no.1 above tunnel portion 4	40	24-Sep-12	10-Nov-12	0%						
S9B-T4-0020	Diaphragm wall & bored pile works at tunnel portion 4 (section not at approach ramp)	420	11-Sep-12	05-Feb-14	0%						
S9B-T4-0025	Tunnel portion 4 Predrill & guide wall (for section at approach ramp)	5	23-Dec-13	30-Dec-13	0%						
S9B-T4-0030	Diaphragm wall works for remaining area of tunnel portion 4 (for section at approach ramp)	30	31-Dec-13	06-Feb-14	0%						
S9B-T4-0035	Tunnel portion 4 Pump Test	14	28-Jan-14	14-Feb-14	0%						
S9B-T4-0040	Tunnel portion 4 ELSW excavation	60	07-Feb-14	19-Apr-14	0%						
S9B-T4-0050	Tunnel portion 4 structure construction	110	22-Apr-14	01-Sep-14	0%						
S9B-T4-0060	Tunnel portion 4 backfilling and ELSW removal	60	02-Sep-14	13-Nov-14	0%						
Section X Works - Central - Wan Chai Bypass Tunnel Structure from western tunnel to chainage 3400											
Tunnel Portion 5											
S10-T5-0005	Tunnel portion 5 Predrill & guide	21	23-Dec-14	19-Jan-15	0%						
S10-T5-0010	Tunnel portion 5 diaphragm wall & bored pile works	110	20-Jan-15	04-Jun-15	0%						
S10-T5-0015	Tunnel portion 5 pump test	14	13-Jun-15	30-Jun-15	0%						
S10-T5-0020	Tunnel portion 5 tunnel ELSW excavation	45	04-Jul-15	25-Aug-15	0%						
S10-T5-0030	Tunnel portion 5 tunnel structure construction	90	26-Aug-15	11-Dec-15	0%						
Tunnel Portion 6											
S10-T6-0040	Tunnel portion 6 Predrill & guide	12	24-Apr-15	08-May-15	0%						
S10-T6-0050	Tunnel portion 6 diaphragm wall & bored pile works at Area 10	45	09-May-15	09-Jul-15	0%						
S10-T6-0055	Tunnel portion 6 pump test	14	25-Jun-15	11-Jul-15	0%						
S10-T6-0060	Tunnel portion 6 tunnel ELSW excavation at Area 10	45	04-Jul-15	26-Aug-15	0%						
S10-T6-0070	Tunnel portion 6 tunnel structure construction at Area 10	58	26-Aug-15	04-Nov-15	0%						



後和 - 中國中鐵聯合
 Chun Wo - CRGL JOINT VENTURE

Remaining Level of Effort Milestone
 Actual Level of Effort Summary
 Actual Work
 Remaining Work
 Critical Remaining Work

CEDD CONTRACT NO. HK/2009/02
 Wan Chai Development Phase II - Central Wan Chai Bypass at Wan Chai East (Contract 2)
 Revised Programme dated 7 April 2011

Date	Revision	Checked	Approved
07-Apr-11		KT	KY

Page 10 of 11

Activity ID	Activity Name	Rem Dur	Start	Finish	2012																
					August					September				October				November			
					23	30	06	13	20	27	03	10	17	24	01	08	15	22	29	05	12
3MRP - AUG 2012 to NOV 2012																					
01 - CONTRACT DATES																					
01.2 - Possession of Site																					
0120-2600	Possession to Portion VIIIA	0	30-Jul-12 A		◆ Possession to Portion VIIIA																
0120-2700	Possession to Portion VIIIB	0	30-Jul-12 A		◆ Possession to Portion VIIIB																
0120-2800	Possession to Portion IXA	0	30-Jul-12 A		◆ Possession to Portion IXA																
0120-2900	Possession to Portion IXB	0	30-Jul-12 A		◆ Possession to Portion IXB																
02 - PRE-CONSTRUCTION WORKS																					
02.2 - Contractor's Submission																					
0220-1250	Concrete Ready Mix/Design Mix - Concrete Plant Trials & Approval	8	04-Aug-11 A	27-Aug-12	Concrete Ready Mix/Design Mix - Concrete Plant Trials & Approval																
0220-1300	Drainage Pipes & Materials - Procurement & Delivery	14	20-Jul-12 A	02-Sep-12	Drainage Pipes & Materials - Procurement & Delivery																
0220-1360	Tunnel Structures Materials - Submission	21	19-Jul-12 A	09-Sep-12	Tunnel Structures Materials - Submission																
0220-1370	Tunnel Structures Materials - ER Review/Comment	28	10-Sep-12	07-Oct-12	Tunnel Structures Materials - ER Review/Comment																
0220-1380	Tunnel Structures Materials - Resubmission	14	08-Oct-12	21-Oct-12	Tunnel Structures Materials - Resubmission																
0220-1390	Tunnel Structures Materials - ER Approval	21	22-Oct-12	11-Nov-12	Tunnel Structures Materials - ER Approval																
0220-1460	Bridge Bearing - Submission	15	10-Oct-11 A	03-Sep-12	Bridge Bearing - Submission																
0220-1470	Bridge Bearing - ER Review/Comment	28	04-Sep-12	01-Oct-12	Bridge Bearing - ER Review/Comment																
0220-1480	Bridge Bearing - Resubmission	14	02-Oct-12	15-Oct-12	Bridge Bearing - Resubmission																
0220-1490	Bridge Bearing - ER Approval	28	16-Oct-12	12-Nov-12	Bridge Bearing - ER Approval																
02.3 - Method Statement / Shop Drawings																					
0230-1270	MS Cut & Cover Tunnel ELS - ER Review & Comment	9	14-Jun-12 A	28-Aug-12	MS Cut & Cover Tunnel ELS - ER Review & Comment																
0230-1280	MS Cut & Cover Tunnel ELS - Resubmission	28	29-Aug-12	25-Sep-12	MS Cut & Cover Tunnel ELS - Resubmission																
0230-1290	MS Cut & Cover Tunnel ELS - ER Approval	28	26-Sep-12	23-Oct-12	MS Cut & Cover Tunnel ELS - ER Approval																
0230-1340	MS Pre-cast Segment Launching - Submission	0	12-Jul-12 A	18-Aug-12 A	MS Pre-cast Segment Launching - Submission																
0230-1350	MS Pre-cast Segment Launching - ER Review & Comment	28	20-Aug-12	16-Sep-12	MS Pre-cast Segment Launching - ER Review & Comment																
0230-1360	MS Pre-cast Segment Launching - Resubmission	28	17-Sep-12	14-Oct-12	MS Pre-cast Segment Launching - Resubmission																
0230-1370	MS Pre-cast Segment Launching - ER Approval	28	15-Oct-12	11-Nov-12	MS Pre-cast Segment Launching - ER Approval																
0230-1470	MS Stressing/Destressing Tendons - ER Review & Comment	0	08-Jun-12 A	07-Aug-12 A	MS Stressing/Destressing Tendons - ER Review & Comment																
0230-1480	MS Stressing/Destressing Tendons - Resubmission	21	08-Aug-12 A	09-Sep-12	MS Stressing/Destressing Tendons - Resubmission																
0230-1490	MS Stressing/Destressing Tendons - ER Approval	28	10-Sep-12	07-Oct-12	MS Stressing/Destressing Tendons - ER Approval																
0230-1560	MS Precasting of Bridge Segment & Beam - Resubmission	9	02-Apr-12 A	28-Aug-12	MS Precasting of Bridge Segment & Beam - Resubmission																
0230-1570	MS Precasting of Bridge Segment & Beam - ER Approval	20	12-Apr-12 A	08-Sep-12	MS Precasting of Bridge Segment & Beam - ER Approval																
02.4 - Contractor's Design and Build Items																					
0240-1010	Temp Bridge "TA" Design - Prep & Submit	60	16-Dec-11 A	18-Oct-12	Temp Bridge "TA" Design - Prep & Submit																
0240-1020	Temp Bridge "TA" Design - ER review and comment	28	19-Oct-12	15-Nov-12	Temp Bridge "TA" Design - ER review and comment																
0240-1105	Int. Noise Enclosure Structural Design - Submission	60	10-Sep-12*	08-Nov-12	Int. Noise Enclosure Structural Design - Submission																
0240-1110	Int. Noise Enclosure Structural Design - ER Review/Resubmission	36	09-Nov-12	14-Dec-12	Int. Noise Enclosure Structural Design - ER Review/Resubmission																
0240-1126	Noise Barrier Design Structural Design - Submission	60	08-Oct-12*	06-Dec-12	Noise Barrier Design Structural Design - Submission																
0240-1150	Perm. Noise Enclosure Structural Design - Submission	60	10-Sep-12	08-Nov-12	Perm. Noise Enclosure Structural Design - Submission																
0240-1160	Perm. Noise Enclosure Structural Design - ER Review/Resubmission	36	09-Nov-12	14-Dec-12	Perm. Noise Enclosure Structural Design - ER Review/Resubmission																
0240-1375	Cut & Cover Tunnel ELS Design - Prep & Submit	21	01-Jun-12 A	09-Sep-12	Cut & Cover Tunnel ELS Design - Prep & Submit																
0240-1376	Cut & Cover Tunnel ELS Design - ER Review & Resubmission	36	10-Sep-12	15-Oct-12	Cut & Cover Tunnel ELS Design - ER Review & Resubmission																
0240-1377	Cut & Cover Tunnel ELS Design - ER Approval	21	16-Oct-12	05-Nov-12	Cut & Cover Tunnel ELS Design - ER Approval																
0240-1379	Cut & Cover Tunnel ELS Fabrication	60	06-Nov-12	04-Jan-13	Cut & Cover Tunnel ELS Fabrication																

- Remaining Level of Effort
- Actual Level of Effort
- Actual Work
- Remaining Work
- Critical Remaining Work
- ◆ Milestone

Contract HY/2009/19

Three Month Rolling Programme (20 AUG 2012 to 19 NOV 2012)

3MRP

3MRP - AUG 2012 to NOV 2012

Page 1 of 6

Activity ID	Activity Name	Rem Dur	Start	Finish	2012																			
					August						September						October						November	
					23	30	06	13	20	27	03	10	17	24	01	08	15	22	29	05	12			
02.5 - Bridge Segment/Beam Off-site Precasting																								
0250-1030	Segment/Beam - Precast Yard Establishment Works	0	21-May-12 A	18-Aug-12 A	Segment/Beam - Precast Yard Establishment Works																			
0250-1040	Segment/Beam - Precast Yard Set-up Survey Station	0	09-Jul-12 A	18-Aug-12 A	Segment/Beam - Precast Yard Set-up Survey Station																			
0250-1050	Segment/Beam - Mould Fabrication	12	14-May-12 A	31-Aug-12	Segment/Beam - Mould Fabrication																			
0250-1100	Segment/Beam - Geometry Control Design Approval	24	14-Dec-11 A	12-Sep-12	Segment/Beam - Geometry Control Design Approval																			
0250-1060	Segment/Beam - Precasting of 1st Segment / Trial Segment	12	13-Sep-12	24-Sep-12	Segment/Beam - Precasting of 1st Segment / Trial Segment																			
0250-1500	Ready for Mass Production of Bridge Segment/Beam	0		24-Sep-12	◆ Ready for Mass Production of Bridge Segment/Beam																			
0250-1600	Bridge Precast Segment Casting & Delivery for E/B Bridge	280	15-Oct-12*	21-Jul-13																				
05 - SECTION 2 & 2A OF THE WORKS																								
05.1 - Cut & Cover Tunnel Ch 4855-4932 (APS Footprint)																								
05.1.1 - D-Wall Construction																								
0511-1010	Site Survey & Setting Out (Portion VIIIA and IXA)	0	30-Jul-12 A	03-Aug-12 A	Site Survey & Setting Out (Portion VIIIA and IXA)																			
0511-1020	Site Establishment (Portion VIIIA and IXA)	18	30-Jul-12 A	08-Sep-12	Site Establishment (Portion VIIIA and IXA)																			
0511-1030	D-wall N47-N51 Pre-drilling	9	30-Jul-12 A	29-Aug-12	D-wall N47-N51 Pre-drilling																			
0511-1035	D-wall N47-N51 Grouting for Existing Seawall Rubble Mound	15	30-Aug-12	15-Sep-12	D-wall N47-N51 Grouting for Existing Seawall Rubble Mound																			
0511-1040	D-wall N47-N51 Guide Wall	15	17-Sep-12	04-Oct-12	D-wall N47-N51 Guide Wall																			
0511-1051	D-wall Panel N51 Construction	16	05-Oct-12	24-Oct-12	D-wall Panel N51 Construction																			
0511-1052	D-wall Panel N50 Construction	16	25-Oct-12	12-Nov-12	D-wall Panel N50 Construction																			
0511-1060	D-wall S49-S55 + BC39 Pre-drilling	30	17-Aug-12 A	22-Sep-12	D-wall S49-S55 + BC39 Pre-drilling																			
0511-1065	D-wall S48-S55 + BC39 Guide Wall	12	24-Sep-12	08-Oct-12	D-wall S48-S55 + BC39 Guide Wall																			
0511-1075	Barrette BC39 Grouting for Existing Seawall Rubble Mound	6	24-Sep-12	29-Sep-12	Barrette BC39 Grouting for Existing Seawall Rubble Mound																			
05.2 - Cut & Cover Tunnel Ch 4932-5149																								
05.2.1 - D-Wall Construction																								
0521-1990.24	D-wall South Panel S81	0	03-Aug-12 A	18-Aug-12 A	D-wall South Panel S81																			
0521-1990.27	D-wall South Panel S82	0	20-Jul-12 A	31-Jul-12 A	D-wall South Panel S82																			
0521-1990.64	D-wall South Panel S80	12	22-Aug-12	04-Sep-12	D-wall South Panel S80																			
0521-1945.20	Temp Bulk Headhead TBW1	6	16-Aug-12 A	25-Aug-12	Temp Bulk Headhead TBW1																			
0521-1945.10	Temp Bulk Headhead TBW5	6	05-Sep-12	11-Sep-12	Temp Bulk Headhead TBW5																			
0521-1945.25	Temp Bulk Headhead TBW2	6	12-Sep-12	18-Sep-12	Temp Bulk Headhead TBW2																			
0521-1945.15	Temp Bulk Headhead TBW4	6	19-Sep-12	25-Sep-12	Temp Bulk Headhead TBW4																			
0521-1945.30	Temp Bulk Headhead TBW3	6	26-Sep-12	03-Oct-12	Temp Bulk Headhead TBW3																			
0521-1835.40	D-wall Panel N54 Construction	0	05-Jul-12 A	26-Jul-12 A	D-wall Panel N54 Construction																			
0521-1835.45	D-wall Panel N53 Construction	0	28-Jul-12 A	15-Aug-12 A	D-wall Panel N53 Construction																			
0521-1835.50	D-wall Panel N61A Construction	0	16-Jul-12 A	02-Aug-12 A	D-wall Panel N61A Construction																			
0521-1830.20	D-wall Panel N70 Construction	0	23-Jul-12 A	13-Aug-12 A	D-wall Panel N70 Construction																			
0521-1830.30	D-wall Panel N66 Construction	9	11-Aug-12 A	29-Aug-12	D-wall Panel N66 Construction																			
0521-1830.35	D-wall Panel N65 Construction	12	30-Aug-12	12-Sep-12	D-wall Panel N65 Construction																			
0521-1835.55	D-wall Panel N64 Construction	12	13-Sep-12	26-Sep-12	D-wall Panel N64 Construction																			
0521-1835.15	D-wall Panel N63 Construction	15	27-Sep-12	15-Oct-12	D-wall Panel N63 Construction																			
0521-1835.16	D-wall Panel N62 Construction	15	16-Oct-12	02-Nov-12	D-wall Panel N62 Construction																			
0521-1835.20	D-wall Panel N60 Construction	3	03-Aug-12 A	22-Aug-12	D-wall Panel N60 Construction																			
0521-1835.65	D-wall Panel N56 Construction	12	16-Aug-12 A	01-Sep-12	D-wall Panel N56 Construction																			
0521-1835.25	D-wall Panel N57 Construction	12	03-Sep-12	15-Sep-12	D-wall Panel N57 Construction																			
0521-1835.70	D-wall Panel N58 Construction	15	27-Oct-12	13-Nov-12	D-wall Panel N58 Construction																			

- Remaining Level of Effort
- Actual Level of Effort
- Actual Work
- Remaining Work
- Critical Remaining Work
- ◆ Milestone

Contract HY/2009/19

Three Month Rolling Programme (20 AUG 2012 to 19 NOV 2012)

3MRP

3MRP - AUG 2012 to NOV 2012

Page 2 of 6

Activity ID	Activity Name	Rem Dur	Start	Finish	2012																		
					August						September						October						November
					23	30	06	13	20	27	03	10	17	24	01	08	15	22	29	05	12		
1011-2200	F4 Crosshead Construction + Bearing	24	31-Oct-12	27-Nov-12																			
1011-1810.10	Pier F5 Dolphin Socketed H-Pile 1	14	18-Jul-12 A	04-Sep-12																			
1011-1810.20	Pier F5 Dolphin Socketed H-Pile 3	17	19-Jul-12 A	07-Sep-12																			
1011-1810.30	Pier F5 Dolphin Socketed H-Pile 2	20	04-Aug-12 A	11-Sep-12																			
1011-1810.40	Pier F5 Dolphin Socketed H-Pile 5	23	17-Jul-12 A	14-Sep-12																			
1011-1790.10	Pier F6 Dolphin Socketed H-Pile 1	15	15-Sep-12	03-Oct-12																			
1011-1790.20	Pier F6 Dolphin Socketed H-Pile 2	18	15-Sep-12	06-Oct-12																			
1011-1790.30	Pier F6 Dolphin Socketed H-Pile 3	21	19-Sep-12	13-Oct-12																			
1011-1790.40	Pier F6 Dolphin Socketed H-Pile 5	24	19-Sep-12	17-Oct-12																			
1011-1790.50	Pier F6 Dolphin Socketed H-Pile 4	12	18-Oct-12	01-Nov-12																			
1011-1790.60	Pier F6 Dolphin Socketed H-Pile 6	12	02-Nov-12	15-Nov-12																			
1011-1910.10	Pier F7 Dolphin Socketed H-Pile 1	15	17-Sep-12	04-Oct-12																			
1011-1910.20	Pier F7 Dolphin Socketed H-Pile 2	18	17-Sep-12	08-Oct-12																			
1011-1910.30	Pier F7 Dolphin Socketed H-Pile 3	21	20-Sep-12	15-Oct-12																			
1011-1910.40	Pier F7 Dolphin Socketed H-Pile 5	24	20-Sep-12	18-Oct-12																			
1011-1910.50	Pier F7 Dolphin Socketed H-Pile 4	12	19-Oct-12	02-Nov-12																			
1011-1910.60	Pier F7 Dolphin Socketed H-Pile 6	12	03-Nov-12	16-Nov-12																			
1011-1862.10	Pier F8 Dolphin Socketed H-Pile 1	15	14-Aug-12 A	05-Sep-12																			
1011-1862.11	Pier F8 Dolphin Socketed H-Pile 2	18	14-Aug-12 A	08-Sep-12																			
1011-1862.12	Pier F8 Dolphin Socketed H-Pile 3	21	15-Aug-12 A	12-Sep-12																			
1011-1862.13	Pier F8 Dolphin Socketed H-Pile 5	24	15-Aug-12 A	15-Sep-12																			
1011-1806	Pier F9 Marine Bored Pile (Low Headroom)	35	20-Aug-12	28-Sep-12																			
1011-2120	Marine bored pile testing F9	18	29-Sep-12	20-Oct-12																			
1011-1981	Pier F10 Marine Bored Pile (Low Headroom)	35	29-Sep-12	10-Nov-12																			
1011-1781	Pier F11 Marine Bored Pile (Low Headroom)	0	26-May-12 A	09-Aug-12 A																			
1011-2130	Marine bored pile testing F11	12	20-Aug-12	01-Sep-12																			
1011-1890.20	Pier F13 Dolphin Socketed H-Pile 3	0	09-May-12 A	04-Aug-12 A																			
1011-1890.40	Pier F13 Dolphin Socketed H-Pile 2	0	01-Jun-12 A	26-Jul-12 A																			
1011-1900	Pier F13 Marine Bored Pile	9	08-Aug-12 A	29-Aug-12																			
1011-1782.10	Pier F14 Dolphin Socketed H-Pile 5	0	31-Mar-12 A	01-Aug-12 A																			
1011-1782.40	Pier F14 Dolphin Socketed H-Pile 1	0	02-Jun-12 A	10-Aug-12 A																			
1011-1785	Pier F14 Marine Bored Pile	14	14-Aug-12 A	04-Sep-12																			
Pier F01 to F02																							
1011-2750	Marine bored pile F1A-2	0	13-Jul-12 A	27-Jul-12 A																			
1011-2751	Marine bored pile F1A-1	0	30-Jul-12 A	11-Aug-12 A																			
1011-2752	Marine bored pile F1A-4	7	04-Aug-12 A	27-Aug-12																			
1011-2753	Marine bored pile F1A-3	14	28-Aug-12	12-Sep-12																			
1011-2760	Marine bored pile testing F1A	18	13-Sep-12	04-Oct-12																			
1011-2730	Dolphin socketed H-pile pier F1-P1	21	17-Sep-12	11-Oct-12																			
1011-2732	Dolphin socketed H-pile pier F1-P2	24	17-Sep-12	15-Oct-12																			
1011-2735	Dolphin socketed H-pile pier F1-P3	27	17-Sep-12	18-Oct-12																			
1011-2780	Marine bored pile F1B-2	24	16-May-12 A	15-Sep-12																			
1011-2783	Marine bored pile F1B-4	14	17-Sep-12	03-Oct-12																			
1011-2790	Marine bored pile testing F1B and F2B	13	12-May-12 A	18-Oct-12																			

- █ Remaining Level of Effort
- █ Actual Level of Effort
- █ Actual Work
- █ Remaining Work
- █ Critical Remaining Work
- ◆ Milestone

Contract HY/2009/19

Three Month Rolling Programme (20 AUG 2012 to 19 NOV 2012)

3MRP

3MRP - AUG 2012 to NOV 2012

Activity ID	Activity Name	Rem Dur	Start	Finish	2012															
					August						September				October				November	
					23	30	06	13	20	27	03	10	17	24	01	08	15	22	29	05
1011-2740	Marine bored pile F2A-3	0	18-Jul-12 A	03-Aug-12 A	Marine bored pile F2A-3															
1011-2741	Marine bored pile F2A-2	0	01-Aug-12 A	18-Aug-12 A	Marine bored pile F2A-2															
1011-2742	Marine bored pile F2A-1	14	20-Aug-12	04-Sep-12	Marine bored pile F2A-1															
1011-2743	Marine bored pile F2A-4	14	05-Sep-12	20-Sep-12	Marine bored pile F2A-4															
1011-2745	Marine bored pile testing F2A	18	21-Sep-12	12-Oct-12	Marine bored pile testing F2A															
1011-2720	Dolphin socketed H-pile pier F2-P1	21	19-Oct-12	13-Nov-12	Dolphin socketed H-pile pier F2-P1															
1011-2940	Dolphin socketed H-pile pier F2-P2	24	19-Oct-12	16-Nov-12	Dolphin socketed H-pile pier F2-P2															
1011-2950	Dolphin socketed H-pile pier F2-P3	27	19-Oct-12	20-Nov-12	Dolphin socketed H-pile pier F2-P3															
10.1.2 - Land Pier Construction																				
Abutment D12																				
1012-1220	Abutment D12 construction (E/B Bridge)	42	03-Sep-12	22-Oct-12	Abutment D12 construction (E/B Bridge)															
Pier D08 to D11																				
1012-1030.30	Pier D08 Bored Pile D8-1	3	11-Aug-12 A	22-Aug-12	Pier D08 Bored Pile D8-1															
1012-1030.40	Pier D08 Bored Pile D8-6	9	06-Aug-12 A	29-Aug-12	Pier D08 Bored Pile D8-6															
1012-1030.50	Pier D08 Bored Pile D8-3	0	23-Jul-12 A	03-Aug-12 A	Pier D08 Bored Pile D8-3															
1012-1030.60	Pier D08 Bored Pile D8-4	0	23-Jul-12 A	09-Aug-12 A	Pier D08 Bored Pile D8-4															
1012-1100	Pier D08 Construct Pile Cap	18	06-Sep-12	26-Sep-12	Pier D08 Construct Pile Cap															
1012-1110	Pier D08 Construct Pier/Column	12	10-Oct-12	24-Oct-12	Pier D08 Construct Pier/Column															
1012-1130	Pier D09 Construct Pile Cap	7	01-Jun-12 A	27-Aug-12	Pier D09 Construct Pile Cap															
1012-1140	Pier D09 Construct Pier/Column	18	28-Aug-12	17-Sep-12	Pier D09 Construct Pier/Column															
1012-1150	Pier D09 Construct Crosshead + Bearing	24	18-Sep-12	16-Oct-12	Pier D09 Construct Crosshead + Bearing															
1012-1160	Pier D10 Construct Pile Cap	21	25-Jun-12 A	12-Sep-12	Pier D10 Construct Pile Cap															
1012-1170	Pier D10 Construct Pier/Column	18	18-Sep-12	09-Oct-12	Pier D10 Construct Pier/Column															
1012-1180	Pier D10 Construct Crosshead + Bearing	24	17-Oct-12	14-Nov-12	Pier D10 Construct Crosshead + Bearing															
1012-1190	Pier D11 Construct Pile Cap	12	12-Jun-12 A	01-Sep-12	Pier D11 Construct Pile Cap															
1012-1200	Pier D11 Construct Pier/Column	12	25-Oct-12	07-Nov-12	Pier D11 Construct Pier/Column															
Pier D05 to D07																				
1012-1290.20	Pier D05 Bored Pile D05-1	12	01-Nov-12*	14-Nov-12	Pier D05 Bored Pile D05-1															
1012-1272	Pier D07 Bored Pile D07-6	0	21-Jul-12 A	09-Aug-12 A	Pier D07 Bored Pile D07-6															
1012-1273	Pier D07 Bored Pile D07-1	0	11-Aug-12 A	18-Aug-12 A	Pier D07 Bored Pile D07-1															
1012-1274	Pier D07 Bored Pile D07-3	18	20-Aug-12	08-Sep-12	Pier D07 Bored Pile D07-3															
1012-1275	Pier D07 Bored Pile D07-4	18	10-Sep-12	29-Sep-12	Pier D07 Bored Pile D07-4															
10.1.3 - E/B Bridge Construction																				
Bridge D3																				
1013-1000.20	Segment and Beam Launching - Submit Design Launching Girder	24	14-May-12 A	15-Sep-12	Segment and Beam Launching - Submit Design Launching Girder															
1013-1000.30	Segment and Beam Launching - Approve Design Launching Girder	28	17-Sep-12	19-Oct-12	Segment and Beam Launching - Approve Design Launching Girder															
1013-1010	Segment and Beam Launching - Fabricate Launching Girder	85	11-Jun-12 A	28-Nov-12	Segment and Beam Launching - Fabricate Launching Girder															

- Remaining Level of Effort
- Actual Level of Effort
- Actual Work
- Remaining Work
- Critical Remaining Work
- ◆ Milestone

Contract HY/2009/19

Three Month Rolling Programme (20 AUG 2012 to 19 NOV 2012)

3MRP

3MRP - AUG 2012 to NOV 2012

Page 6 of 6